

Scheme Development - Overhead Electric Power Lines

Safety by Design

Know your responsibility

- Health and Safety at Work Act 1974
- CDM Regulations 2007
- Electricity at Work Regulations 1989
- MHSW Regulations 1992
- HSE Guidance Note GS6



Identify the risk

- Watchman GIS layer
- Marker posts on the Network
- C2 Stats enquiry



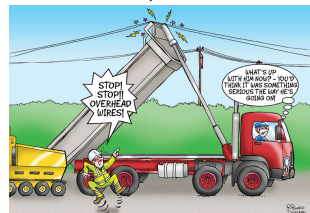
Do I need to survey?

- If you need to survey as part of scheme development, assess the risk.



Is the work required?

- Is the work really required under or near an overhead electric power line?



Can the power be switched off?

- Contact the electric company and ask if the power can be switched off during the work.
- Include the cost for this provision in the derived price and/or specification.



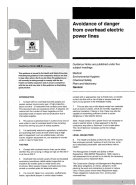
Obtain safe clearance heights

- Contact the electric company and request the safe clearance height beneath the overhead electric power line.
- Ensure the safe clearance height covers all areas of work beneath the overhead electric power line e.g. top of embankment.



Discuss safe working methods

- Discuss and agree safe working methods and control measures with the construction team and CDM-C in scheme development.
- Consult the HSE's Guidance Note GS6 - *Avoidance of danger from overhead electric power lines*
- Permit to work under overhead electric power line.



Scheme Drawings

- Ensure overhead electric power lines are clearly marked on all scheme drawings in the standard format.
- Standard A-one+ demarcation detail for any overhead electric power lines crossing an area of work, including lengths of traffic management.



LOOK Up !



LOOK Out !